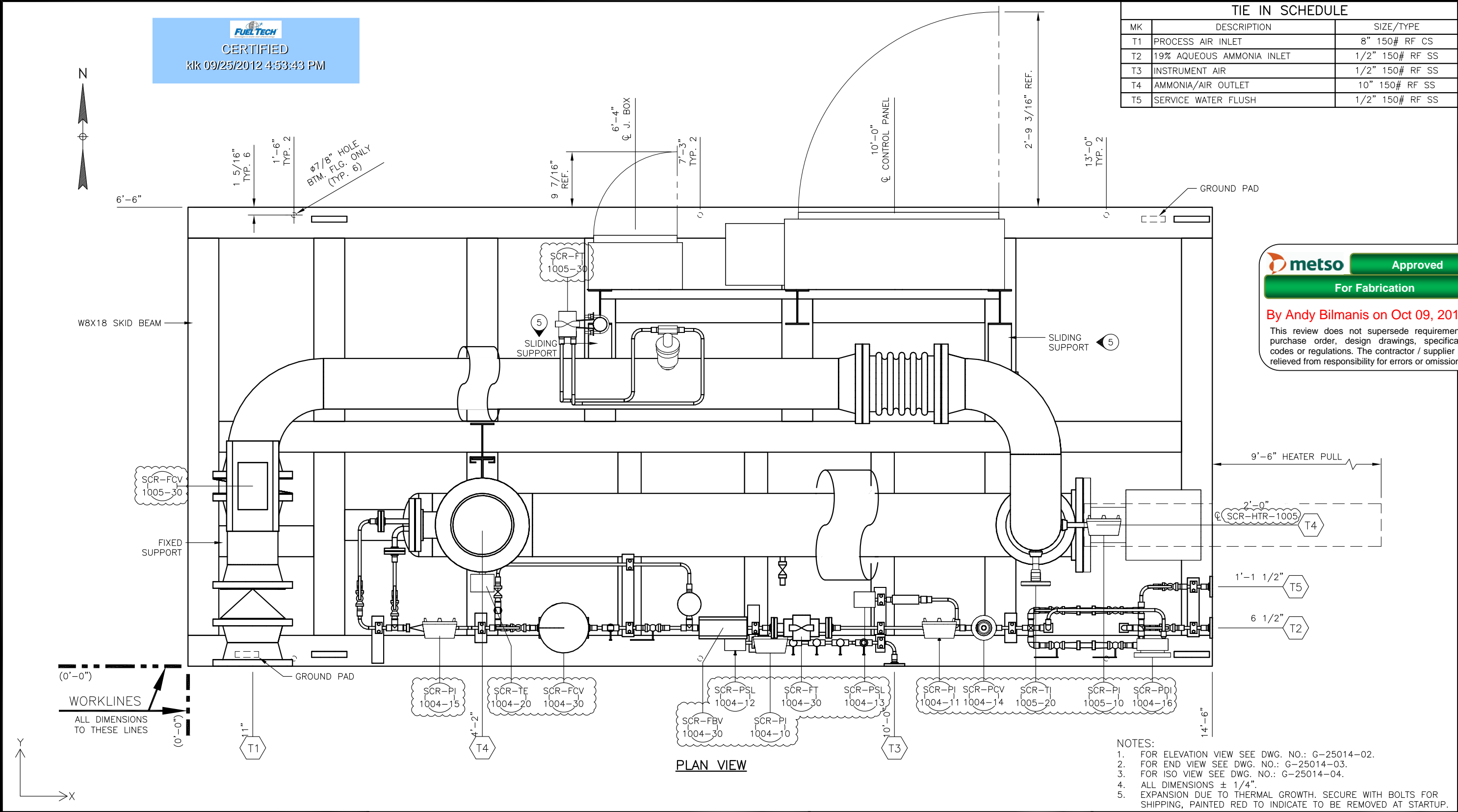


FUEL TECH
CERTIFIED
 kfk 09/25/2012 4:53:43 PM

TIE IN SCHEDULE		
MK	DESCRIPTION	SIZE/TYPE
T1	PROCESS AIR INLET	8" 150# RF CS
T2	19% AQUEOUS AMMONIA INLET	1/2" 150# RF SS
T3	INSTRUMENT AIR	1/2" 150# RF SS
T4	AMMONIA/AIR OUTLET	10" 150# RF SS
T5	SERVICE WATER FLUSH	1/2" 150# RF SS



metso Approved
 For Fabrication
 By Andy Bilmanis on Oct 09, 2012
 This review does not supersede requirements of purchase order, design drawings, specifications, codes or regulations. The contractor / supplier is not relieved from responsibility for errors or omission.

PLAN VIEW

- NOTES:
- FOR ELEVATION VIEW SEE DWG. NO.: G-25014-02.
 - FOR END VIEW SEE DWG. NO.: G-25014-03.
 - FOR ISO VIEW SEE DWG. NO.: G-25014-04.
 - ALL DIMENSIONS ± 1/4".
 - EXPANSION DUE TO THERMAL GROWTH. SECURE WITH BOLTS FOR SHIPPING, PAINTED RED TO INDICATE TO BE REMOVED AT STARTUP.

INTEGRATED FLOW SOLUTIONS
 6461 REYNOLDS RD, TYLER, TEXAS, USA 75708
 PHONE NUMBER: +1 (903) 595-6511
 EMAIL: SUPPORT@IFSOLUTIONS.COM

REV.	DATE	DESCRIPTION	DES	ENG
1	25JUN12	REVISED TAGGING PER CUSTOMER COMMENTNS	RM	RC
0	22FEB12	APPROVED FOR CONSTRUCTION	RM	RC
B	06JAN12	ISSUED FOR CUSTOMER APPROVAL	RM	RC
A	15DEC11	ISSUED FOR CUSTOMER APPROVAL	RM	RC

PROJECT: GAINESVILLE RENEWABLE ENERGY CENTER (GREC)
 CUSTOMER NAME: FUEL TECH
 END USER: GAINESVILLE RENEWABLE ENERGY CENTER (GREC)
 SYSTEM DESCRIPTION: AMMONIA FLOW CONTROL SKID (AFCU)
 CUSTOMER PO#: 34081-1
 ESTIMATED DRY WEIGHT: 5900 LBS.
 ESTIMATED OPERATING WEIGHT: 5950 LBS.

GENERAL ARRANGEMENT AMMONIA FLOW CONTROL SKID (AFCU)

CLIENT No.: P00090754

SCALE:	SECTION	JOB	SHEET	TOTAL SHEETS	REV.
3/4"=1'-0"				4	1

PM.: D. POLLAN G - 25014 - 01

THIS DRAWING IS THE PROPERTY OF INTEGRATED FLOW SOLUTIONS AND SHALL NOT BE REPRODUCED, COPIED, LENT, NOR USED FOR ANY PURPOSE OTHER THAN THAT WHICH IT IS FURNISHED EXCEPT BY WRITTEN PERMISSION.